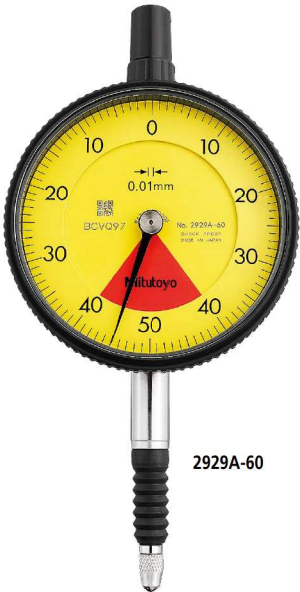


SERIES 2 — Standard One Revolution Type for Error-free Reading, Water-proof Type

- The one revolution dial indicator with improved water resistance prevents the possibility of reading errors.
- Mitutoyo's unique shock-proof mechanism is incorporated, providing improved resistance to shock due to sudden spindle retraction caused by impact.
- It is highly durable thanks to a hardened stainless-steel stem and spindle, carbide probe, and a large gear made of wear- and deformation-resistant materials.
- Application of an anti-reflective and hard surface coating improves scale visibility along with scratch and chemical resistance.
- The dead zone in red indicates "accuracy not guaranteed".



SPECIFICATIONS

Metric		ISO/JIS type								ANSI/AGD type	
Code No.		Graduation (mm)	Range (range/rev) (mm)	Maximum permissible error (MPE) (μm)						Dial reading	Measuring force (N)
w/lug	Flat-back			Indication error				Hysteresis	Repeat-ability		
				1/10 Rev	1/2 Rev	1 Rev	Measuring range				
2929A-60	2929AB-60	0.01	0.8 (1)	5	—	—	8	3	3	40-0-40	2.0 or less
2900A-70	2900AB-70	0.001	0.08 (0.1)	2	—	—	3	2	0.5	40-0-40	2.0 or less

Inch		ANSI/AGD type							
Code No.		Graduation (in)	Range (range/rev) (in)	Accuracy (in)			Repeat-ability (in)	Dial reading	Measuring force (N)
w/lug	Flat-back			First 1 Rev/2.5 Rev/10 Rev		Retrace			
2910A-72	2910AB-72	0.0001	0.008/0.01	±0.0001/—/—		0.0001	±0.00003	4-0-4	2.5 or less

Note: Completed products inspection is performed in the vertical orientation (contact point downward) and the stated accuracy is guaranteed.

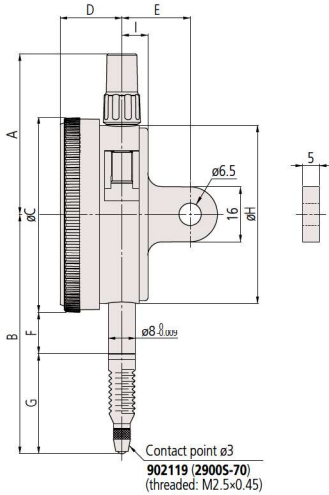
Optional Accessories

- Limit hand (2 pcs.), Bezel clamp
- Refer to page 07-31 for details.

DIMENSIONS

ISO/JIS
Type

Unit: mm

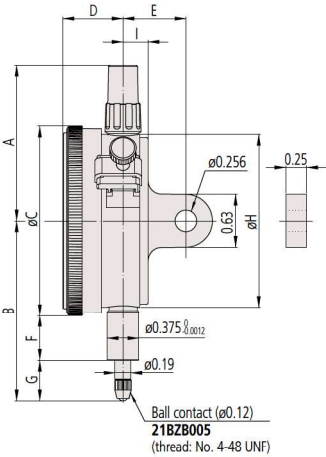


Code No.	A	B	C	D	E	F	G	H	I	Mass (g)	
										w/lug	Flat-back
2929A-60	47.2	70	57	18.1	20	12.3	29.2	52	7.6	146	137
2900A-70	47.2	67	57	18.1	20	12.3	26.2	52	7.6	150	141

Note: Refer to pages 07-63 to 07-68 for details of contact points.

ANSI/AGD
Type

Unit: in

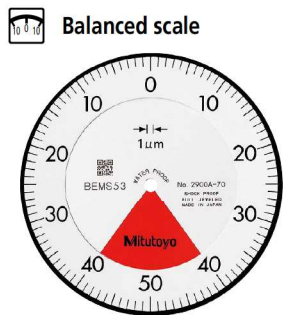


Code No.	A	B	C	D	E	F	G	H	I	Mass (g)	
										w/lug	Flat-back
2910A-72	1.86	2.02	2.24	0.71	3/4	0.54	0.36	2.05	0.30	150	141

Note: Refer to pages 07-63 to 07-68 for details of contact points.

Dial Indicators

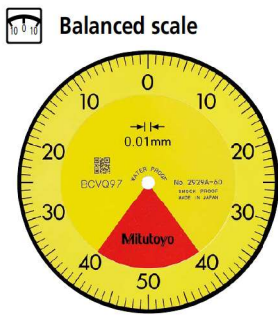
SERIES 2 — Standard One Revolution Type for Error-free Reading, Water-proof Type



Graduation: 0.001 mm,
Measuring range: 0.08 mm

2900A-70

- One revolution
- Shockproof
- Waterproof
- Jeweled bearing



Graduation: 0.01 mm,
Measuring range: 0.8 mm

2929A-60

- One revolution
- Shockproof
- Waterproof

FEATURES

Metric		ISO/JIS type		ANSI/AGD type	
Code No.		Flat-back	Shockproof	Waterproof	Jeweled bearing
2929A-60	2929AB-60	✓	✓	✓	✓
2900A-70	2900AB-70	✓	✓	✓	✓

Inch		Flat-back	Shockproof	Waterproof	Jeweled bearing
2910A-72	2910AB-72	✓	✓	✓	✓